

Yellowstone County

Lockwood (Revenue, Expenses, Budget)

October 2011

Do You Have Questions?

- ◆ How much road revenue does the Lockwood area generate?
- ◆ How much does Yellowstone County spend in the Lockwood area?
- ◆ What is the road budget for the Lockwood area?
- ◆ Other questions?

What Are Your Goals?

- ◆ Better roads in Lockwood area
- ◆ Participate in budgeting and setting project priorities
- ◆ Understand issues and challenges
- ◆ Other Goals ???

TOPICS DISCUSSING TODAY

- ◆ Revenue / Budget

- ◆ Expenses

 - ◆ Projects

- ◆ Budget

 - ◆ Projects

YELLOWSTONE COUNTY County Map

Yellowstone County FY11 Road Taxes @ 37.2 mills

Jurisdictions

- City of Billings; Town of Broadview; City of Laurel
- COUNTY



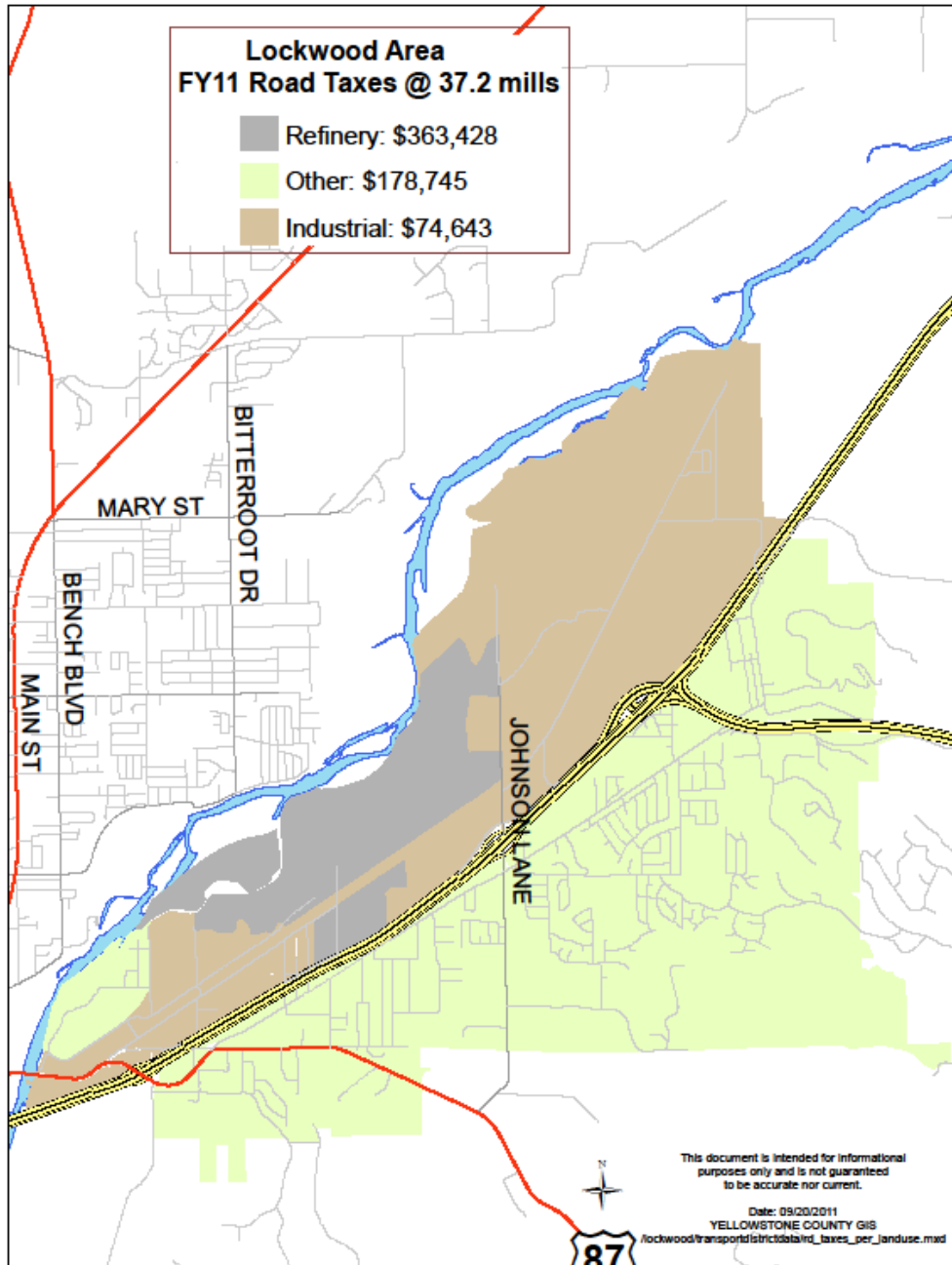
This document is intended for informational purposes only and is not guaranteed to be accurate nor current.

Date: 09/02/2011
YELLOWSTONE COUNTY GIS
/lockwood/transport/stricdata/rd_taxes_county.mxd

County Wide Road Revenue / Budget

- ◆ Total revenue / budget for FY 2012 is estimated at ...
- ◆ \$ 10,163,006
- ◆ Or \$ 8,831,774 without refineries

LOCKWOOD Area Map



Lockwood Area Road Revenue

◆ Refinery (Exxon)	\$ 363,428
◆ Other (residential)	\$ 178,745
◆ Industrial	\$ 74,643
◆ TOTAL	\$ 616,816
◆ TOTAL without refinery	\$ 253,388

Lockwood Area Road Revenue

◆ TOTAL \$ 253,388

◆ Whole County (without 3 refineries) \$ 8,831,774

◆ Percentage 2.87 %

Lockwood Area Road Revenue

◆ TOTAL \$ 297,517

◆ Whole County (with 3 refineries) \$ 10,163,006

◆ Percentage (42 miles / 1267 Miles = 3.3 %) 2.93 %

Lockwood Area Revenue SUMMARY

◆ Refinery road revenue (all 3) \$ 1,331,232

- Based on FY 2010 – 2011 data

◆ Lockwood area revenue \$ 253,388 (2.87 %)

- Without Exxon road revenue
- (\$ 253,388 / \$ 8,831,774)

◆ Lockwood area revenue \$ 297,517 (2.93 %)

- With portion of all refinery road revenue
- (\$ 297,517 / \$ 10,163,006)


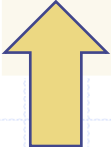
Typical House Road Tax Contribution

- ◆ \$ 100,000 House \$ 104.14 per year
- ◆ \$ 200,000 House \$ 124.97 per year
- ◆ \$ 300,000 House \$ 187.46 per year

YELLOWSTONE COUNTY Lockwood Area Revenue (Estimated) & Expenditures

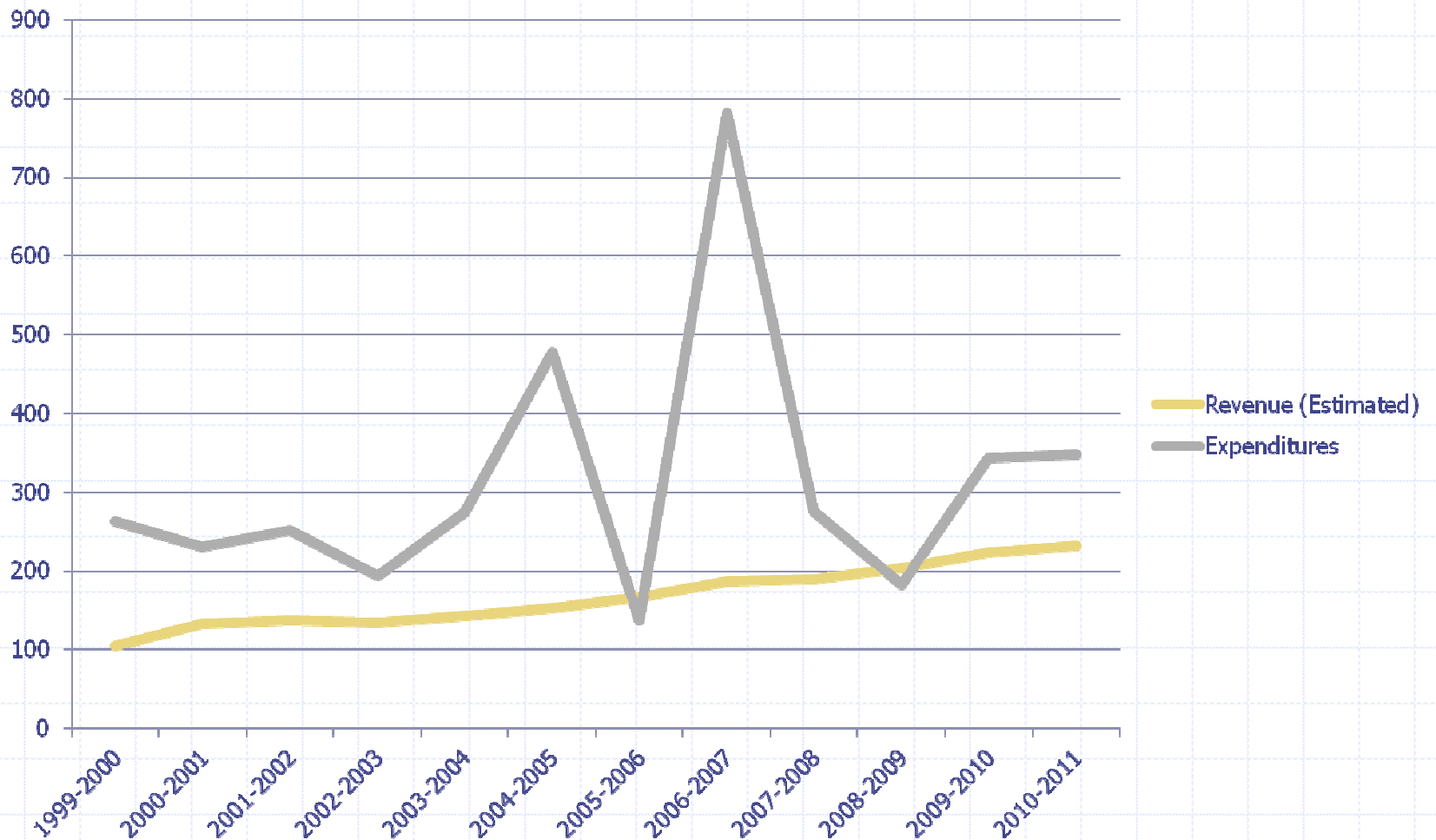
(number are in 1,000's)

Fiscal Year	1999-2000	2000-2001	2001-2002	2002-2003	2003-2004	2004-2005	2005-2006	2006-2007	2007-2008	2008-2009	2009-2010	2010-2011	Average
Revenue (Estimated)	105	133	137	135	143	153	167	186	189	204	224	232	167
Expenditures	263	230	251	194	274	478	137	781	276	183	344	347	313
% of Revenue	250%	173%	183%	144%	192%	312%	82%	420%	146%	90%	154%	150%	191%



 Low High

YELLOWSTONE COUNTY Lockwood Area Revenue (Estimated) & Expenditures

(number are in 1,000's)

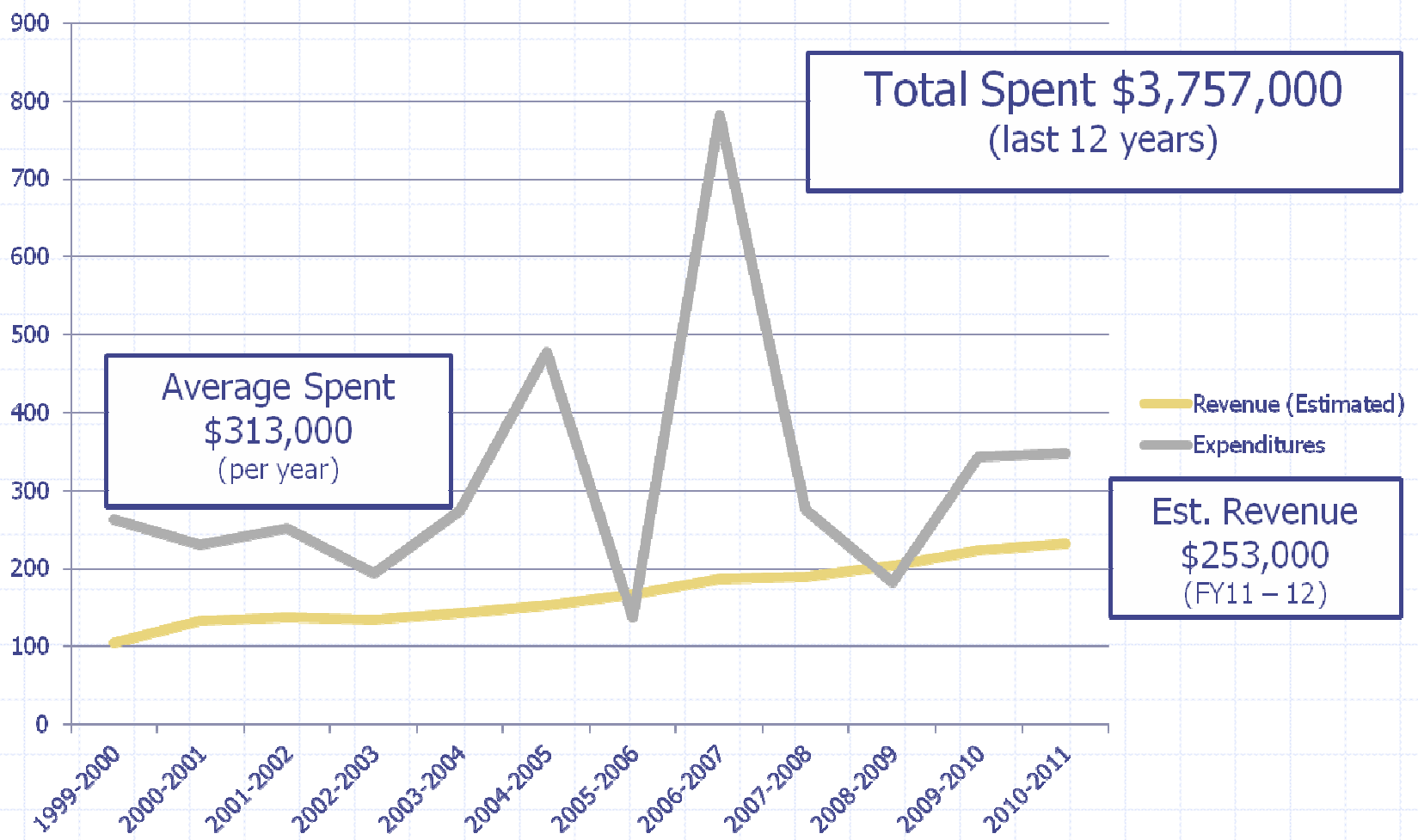


Lockwood Area Work & Projects

- ◆ TOTAL Spent (FY99-00 – FY10-11) \$ 3,757,000 (12 years)
- ◆ Average Spent Per Year \$ 313,000
 - High of \$ 781,000 and low of \$ 137,000
- ◆ Revenue FY11-12 \$ 253,000
- ◆ This is spending more than revenue by 23.7 %

YELLOWSTONE COUNTY Lockwood Area Revenue (Estimated) & Expenditures

(number are in 1,000's)



YELLOWSTONE COUNTY
FY 2011 – 2012 Lockwood Area Work YTD

◆ TOTAL Spent (Jul 1, 2011 to Oct 11, 2011) \$ 69,176 (YTD)

Lockwood Area Population

- ◆ TOTAL in Yellowstone County 147,972 (2010)

- ◆ TOTAL (except Billings, Laurel, Broadview) 36,892 (2010)
 - ◆ Billings 104,170 – Laurel 6,718 – Broadview 192

- ◆ Percentage of Lockwood area 19.0 %
 - ◆ Lockwood estimated at 7,000

Lockwood Area Work & Projects

- ◆ Population of Lockwood Area (est. 2010 data) 7,000
- ◆ Percentage of Yellowstone County 19 %
- ◆ Revenue FY 2012 \$ 297,517
- ◆ If Lockwood revenue were 19% of Budget \$ 1,930,971

Road Inventory In Miles

◆ Gravel Roads Maintained 873

◆ Paved Roads Maintained 394

◆ RSID Maintained Roads 153

■ (Gravel 66, Paved 87)

◆ Total Maintained Roads 1420

Yellowstone County Gas Tax

- ◆ Gas tax is collected by states and distributed to cities and counties based on road miles, for roads that are “open to public travel”. MDT determines fuel tax allocations as set forth in MCA 15-70-101.
- ◆ Average Fuel Tax Allocation \$ 277,000 (past 13 years)
 - (Low of \$272,00 – High of \$285,000)
- ◆ If this is spread over 1267 miles \$ 219 per mile
- ◆ Keep in mind that the Yellowstone County portion of fuel tax is for its roads and all bridges in the County, including those bridges that are in the City of Billings.

Budget Per Mile Per Year

- ◆ Average Budget \$ 6,711,101

- ◆ Gravel Roads \$ 6,120 per mile per year

- ◆ Paved Roads \$ 12,240 per mile per year

- ◆ Example (Old Hardin Road) \$ 576,000 (4.54 miles)
 - Resurfaced in 2006 at \$ 127,000 per mile
 - Est. 2011 cost would be \$ 149,000 per mile

Road Replacement Costs (for Roads Y.C. Maintains)

Gravel (873 Miles)

3'' *Surface Gravel*

6'' *Base Gravel*

\$ 235 Million

Paved (394 Miles)

3'' *Asphalt*

6'' *Base Material*

\$ 150 Million

\$ 385 Million Total

Annual Expenditure To Maintain (Average)

\$ 6.7 Million (1.75 %)

Lockwood Area & Yellowstone County Road Inventory In Miles

<p>◆ Roads Maintained 42</p> <ul style="list-style-type: none"> ▪ (62 total miles) ▪ (42 miles maintained by YC) ▪ (8 miles subdivision roads) ▪ (12 miles RSID roads) 	<p>(Lockwood)</p> <p>MILES</p>	<p>1267</p> <p>(County)</p> <p>MILES</p>
<p>◆ Average Expenditures</p> <p style="margin-left: 20px;">per year</p>	<p>\$ 313,000</p>	<p>\$ 4,315,000</p> <p style="margin-left: 20px;">per year</p>
<p>◆ Average Expenditures</p> <p style="margin-left: 20px;">year per mile per year</p>	<p>\$ 7,450</p>	<p>\$ 3,400</p> <p style="margin-left: 20px;">per mile per</p>

Have We Answered Questions?

- ◆ How much road revenue does the Lockwood area generate?
 - \$ 297,517 per year (FY 2011 – 2012)

- ◆ How much does Yellowstone County spend in the Lockwood area?
 - Average of \$ 313,000 per year

- ◆ What is the road budget for the Lockwood area?
 - Varies depending on priorities and available resources

YELLOWSTONE COUNTY AND LOCKWOOD

Next Steps?

- ◆ Where do we go from here?
- ◆ Keep doing what has been done in recent past?
- ◆ Increase taxes / revenue?
 - County Wide ?
 - Lockwood Area ?
- ◆ Lockwood incorporates as City ?
- ◆ Other ideas ?

Yellowstone County

Lockwood (Revenue, Expenses, Budget)

Thank You !

Questions?

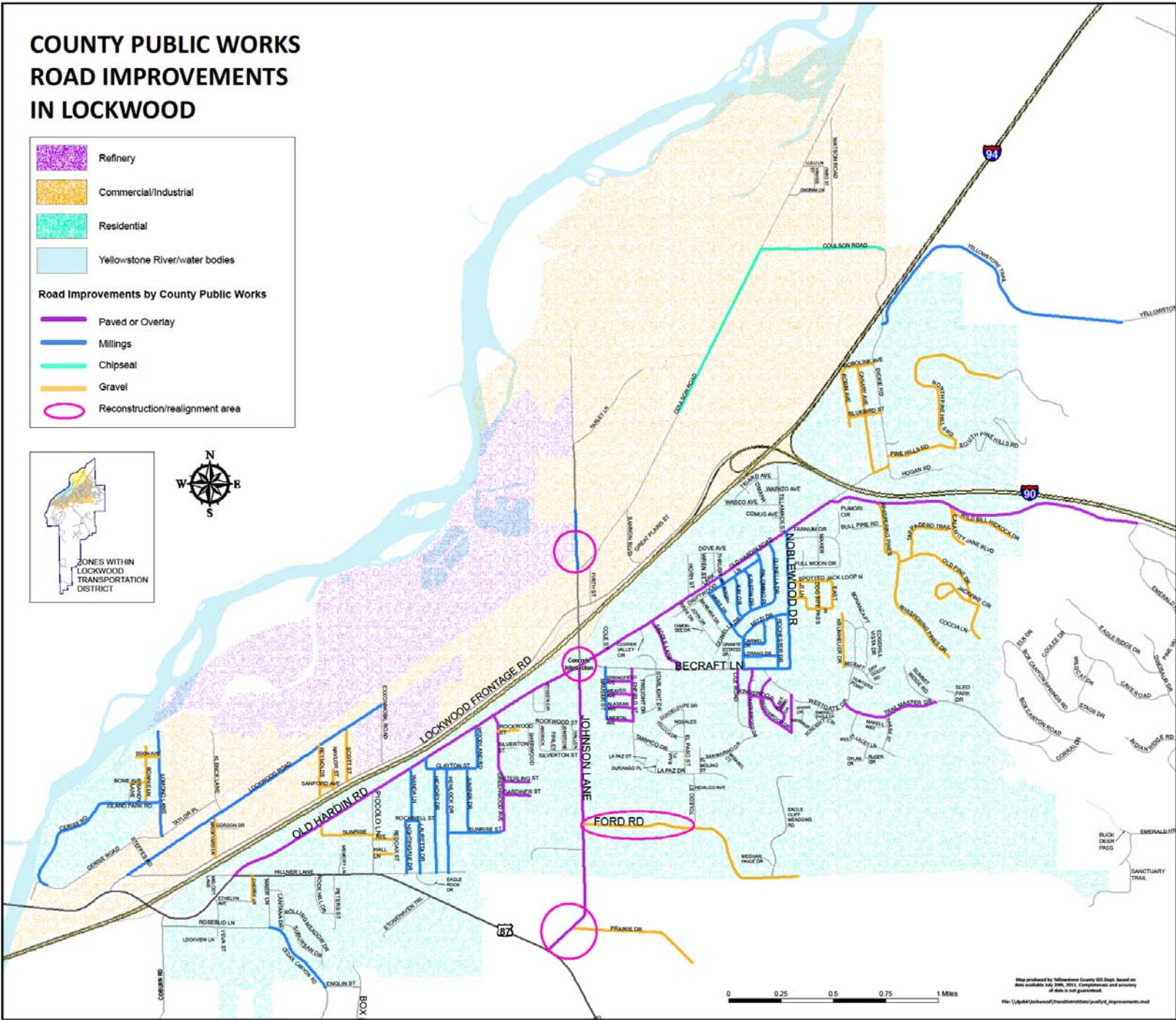
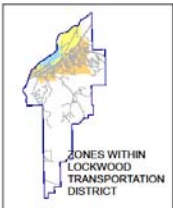
COUNTY PUBLIC WORKS ROAD IMPROVEMENTS IN LOCKWOOD

Legend

-  Refinery
-  Commercial/Industrial
-  Residential
-  Yellowstone River/water bodies

Road Improvements by County Public Works

-  Paved or Overlay
-  Millings
-  Chipseal
-  Gravel
-  Reconstruction/realignment area



Map produced by Yellowstone County GIS Dept. based on data available July 2010, 2011. Completeness and accuracy of data is not guaranteed.
File: \\g:\data\lockwood\transportation\map\proj\proj_improvements.mxd

What Are Your Goals?

- ◆ Better roads in Lockwood area
- ◆ Participate in budgeting and setting project priorities
- ◆ Understand issues and challenges
- ◆ Other Goals ???

Refinery Road Revenue

- ◆ Road revenue – all 3 refineries \$ 1,331,232 (FY 10-11)
- ◆ Miles of County Roads Maintained 1267
- ◆ \$ per Mile \$ 1,050
- ◆ Lockwood portion (42 miles) \$ 44,129