

Introducing

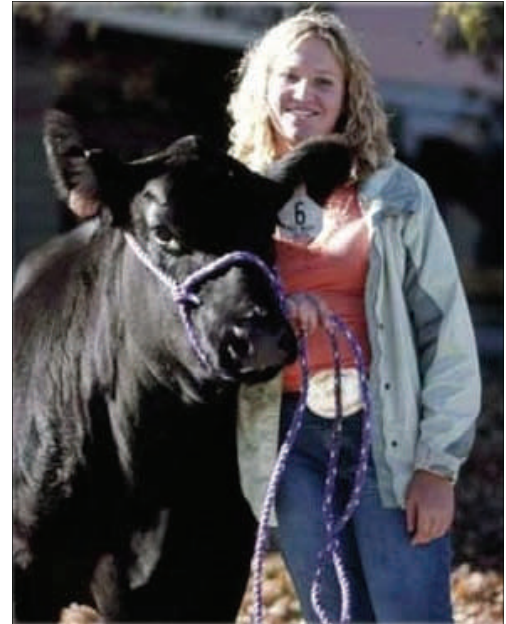
ShowPride



Super Nutrition for Superior Results

Westfeeds understands the tremendous effort it takes to be ready for that important show event. That is why we put tremendous effort into formulating and manufacturing high quality show feeds to help your animals gain that all important competitive edge.

ShowPride show feeds contain the latest nutrition technology to provide the correct balance of protein, vitamins and trace minerals to help your show animals reach their genetic potential...to help you achieve that winning moment.



- ***ShowPride Beef***
 - ***ShowPride Lamb***
 - ***ShowPride Swine***

***Ring of Honor Awards for Grand & Reserve Champion at
County, State & National Shows***

WestFeeds®



"Excellence in Animal Nutrition"

ShowPride

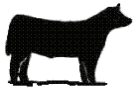


Quality Show Feeds

Westfeeds understands the tremendous effort it takes to be ready for that important show event.

That is why we put tremendous effort into formulating and manufacturing high quality show feeds to help your animals gain that all important competitive edge.

ShowPride show feeds contain the latest nutrition technology to provide the correct balance of protein, vitamins and trace minerals to help your show animals reach their genetic potential....to help you achieve that winning moment.



ShowPride Beef

Grow/Finish

A high quality base ration fed with hay to provide essential vitamins, minerals, protein and energy for steers being fitted for show

Features

- Provides 13% protein, 3.5% fat and 8% fiber
- High quality ingredients enhance feed intake and gains
- Multiple sources of protein improve feed digestion in the rumen
- Complex trace minerals increase nutrient absorption
- Manna oligosaccharides (MOS) and beta glucans improve animal health and performance
- Yeast cultures enhance feed palatability and digestion
- Natural plant extracts modify rumen fermentation and improve feed efficiency, growth and cattle health



ShowPride Swine

Grow-Finish AU-50

A high quality complete ration that provides essential vitamins, minerals, protein and energy to market pigs being fitted for show

Features

- Provides 18% crude protein, 5% fat and 1.2% Lysine
- Unique fat source produces a hard, clean cover and finish
- High levels of amino acids promote lean muscle growth
- Complexed trace minerals increase nutrient absorption
- Manna oligosaccharides (MOS) and beta glucans improve animal health and performance
- Yeast cultures enhance feed palatability and digestion
- Aureomycin improves feed efficiency and gain



ShowPride Lamb

Grow-Finish BT-30

A high quality base ration fed with hay to provide essential vitamins, mineral protein and energy for lambs being fitted for show

Features

- Provides 18% crude protein, 3.5% fat and 8% fiber
- High quality ingredients enhance feed intake and gain
- Multiple source proteins improve feed digestion in the rumen
- Manna oligosaccharides (MOS) and beta glucans improve animal health and performance
- Yeast cultures enhance feed palatability and digestion
- Bovatec improves feed efficiency and reduces risk of coccidiosis



2011 Ring of Honor Awards Program

4H & FFA Exhibitors

Westfeeds is proud to support youth who use our quality show feeds and participate in FFA and 4-H exhibitions. ShowPride Ring of Honor Awards Program rewards the Grand Champion and Reserve Grand Champion Beef, Swine and Lamb with Free Westfeeds Product and a personalized Ring of Honor ShowPride Jacket.

Program Guidelines and Eligibility

- 1) Only 4-H and FFA members who use Westfeeds ShowPride as the exclusive commercial feed in their projects for at least 75 days prior to the show are eligible for rewards.

Qualifying Products

- a) ShowPride Beef
- b) ShowPride Swine
- c) ShowPride Lamb

Submit copies of all invoices /receipts from dealers of Westfeeds ShowPride products used in your 4-H or FFA project along with a completed 2011 ShowPride Application

- 1) A color picture (winning day photo preferred) is required with the application
- 2) Each applicant is eligible to win one time each year
- 3) These awards are offered to overall show winners, not individual class or event winners, Jackpot and Prospect Show winners are not eligible

Ring of Honor Winners for County, State and National Shows

Overall Grand Champion	\$100.00 worth of Westfeeds Product plus a Personalized Ring of Honor ShowPride Jacket
Overall Reserve Champion	\$50.00 worth of Westfeeds Product plus a Personalized Ring of Honor ShowPride Jacket

ShowPride....Super Nutrition for Superior Results

Billings, MT
1-800-283-5505

Great Falls, MT
1-800-926-1074

Lewistown, MT
1-800-348-5451

Miles City, MT
1-800-339-3109



2011 Ring of Honor Awards Program

FFA & 4-H Exhibitors

Application

Participants Name: _____ Date: _____

Street Address: _____ City: _____

State: _____ Zip: _____ Phone: _____

FFA or 4H Club Chapter: _____

Name of Show: _____ Show Location: _____

Date of Show: _____ Days on ShowPride: _____

Award (Check One) Grand Champion Reserve Grand Champion

Species (Check One) Beef Swine Lamb

ShowPride Products Used: _____

Photographers Name: _____

ShowPride Jacket Size (Adult Sizes) Small Medium Large X-Large 2-X Large

Name on Jacket: _____

Release:

Westfeeds, Inc. has my permission to use the information provided on this form or any part of it, together with my name and address, for all advertising and other sales promotion purposes or other media now known or later developed.

Westfeeds, Inc. also has my permission to use any and all photographs, video tapes or audio tapes associated with this application for any and all purposes including advertising, sales promotion, and sales training.

Signature of Applicant: _____ Date: _____

Signature of Parent/Legal Guardian: _____ Date: _____

Signature of FFA/4-H Club Leader: _____ Date: _____

Mail completed form along with copies of all invoices/receipts from dealers for Westfeeds products used and a color picture of the winning moment to:

**Westfeeds Inc, Attn: Marketing Department, 1420 Minnesota Avenue,
Billings, Montana 59101**



ShowPride Beef

Grow/Finish



Product Description

A high quality base ration that is fed with hay to provide essential minerals, vitamins, protein and energy to market steers being fitted for show

Features & Benefits

- Provides 13% protein, 3.5% fat and 8.0% fiber
- High quality ingredients enhance feed intake and gains
- Multiple sources of proteins improve feed digestion in the rumen
- Complexed trace minerals increase nutrient absorption
- Manna oligosaccharides (MOS) and beta glucans improve animal health and performance
- Natural plant extracts modify rumen fermentation and improve feed efficiency, growth and cattle health
- Produced utilizing good manufacturing practices for superior quality
- Manufactured by a locally owned and operated company for products you can trust

Guaranteed Analysis*

Crude Protein, minimum.....	13.0 %
Crude Fat, minimum.....	3.5 %
Crude Fiber, maximum.....	8.0 %
Calcium, minimum.....	0.75 %
Calcium, maximum.....	1.25 %
Phosphorous, minimum.....	0.4 %
Salt, minimum.....	0.25 %
Salt, maximum.....	0.75 %
Potassium, minimum.....	0.7 %
Vitamin A, minimum.....	10,000 IU/lb
Selenium, minimum.....	0.3 ppm

Ingredients*

Ground Corn, Wheat Middlings, Soybean Hulls, Canola Meal, Suncured Alfalfa, Molasses, Distillers Dried Grains and Solubles, Calcium Carbonate, Dried Brewers Yeast (*Saccharomyces cerevisiae*), Dried Yeast Fermentation Solubles, Salt, Calcium Lignosulfonate, Natural and Artificial Flavors, Mannan Oligosaccharides, Zinc Amino Acid Complex, Manganese Amino Acid Complex, Copper Amino Acid Complex, Cobalt Glucoheptanate, Vitamin A Acetate, Cholecalciferol (Source of Vitamin D3), dl Alpha Tocopherol Acetate (Vitamin E), Zinc Sulfate, Manganese Sulfate, Copper Sulfate, Cobalt Sulfate, Ethylenediamine Dihydriodide, Sodium Selenite, Potassium Iodide, Ethoxyquin (a preservative), Soybean Oil

* Guaranteed analysis and ingredients may vary slightly, depending on manufacturing location.

Mixing/Feeding Directions

Begin feeding at the daily rate of 2/3 lbs per 100 lbs of body weight. Split total daily amount into two equal feedings, morning and evening. Gradually increase feeding rate (over a period of 3-4 weeks) to approximately 2 lbs per 100 lbs of body weight. Adjust final feeding rate according to desired rate of gain, market weight and degree of finish. Feed good quality grass or grass-alfalfa hay to appetite and free choice salt and mineral. Assure a constant supply of fresh, clean water. Contact your local Westfeeds Dealer or Territory Manager for additional product information.

Westfeeds Locations

Billings, MT
1-800-283-5505

Great Falls, MT
1-800-926-1074

Lewistown, MT
1-800-348-5451

Miles City, MT
1-800-339-3109



ShowPride Lamb Grow-Finish BT-30



Product Description

A high quality base ration that is fed with hay to provide essential minerals, vitamins, protein and energy for lambs being fitted for show

Features & Benefits

- Provides 18% protein, 3.5% fat and 8.0% fiber
- High quality ingredients enhance feed intake and gains
- Multiple source proteins improve feed digestion in the rumen
- Manna oligosaccharides (MOS) and beta glucans improve animal health and performance
- Yeast cultures enhance feed palatability and digestion
- Bovatec improves feed efficiency and reduces risk of coccidiosis
- Produced utilizing good manufacturing practices for superior quality
- Manufactured by a locally owned and operated company for products you can trust

Guaranteed Analysis*

Crude Protein, minimum.....	18.0 %
Crude Fat, minimum.....	3.5 %
Crude Fiber, maximum.....	8.0 %
Calcium, minimum.....	1.25 %
Calcium, maximum.....	1.75 %
Phosphorous, minimum.....	0.4 %
Salt, minimum.....	0.25 %
Salt, maximum.....	0.75 %
Vitamin A, minimum.....	10,000 IU/LB
Selenium, minimum.....	0.3 PPM

Medicated

For the prevention of coccidiosis caused by Eimeria ovina, E. crandallis, E. ovinoidalis (E. ninakahlyakimovae), E. parva and E. intricate in sheep maintained in confinement

Active Drug Ingredient

Lasalocid.....30 GMS/TON

Ingredients*

Ground Corn, Wheat Middlings, Canola Meal, Distillers Dried Grains and Solubles, Suncured Alfalfa, Molasses, Soybean Meal, Soybean Hulls, Calcium Carbonate, Ammonium Chloride, Salt, Calcium Lignosulfonate, Dried Brewers Yeast (Saccharomyces cerevisiae), Dried Yeast Fermentation Solubles, Sodium Selenite, Vitamin A Acetate, Cholecalciferol (Source of Vitamin D3), Sodium Molybdenum, Mannan Oligosaccharide, Sulfur Ferrous Carbonate, Zinc Oxide, Manganous Oxide, Cobalt Carbonate, Calcium Iodate, Ethoxyquin (preservative), Soybean Oil, Artificial Flavoring

* Guaranteed analysis and ingredients may vary slightly, depending on manufacturing location.

Mixing/Feeding Directions

Begin feeding at the daily rate of 2/3 lbs per 100 lbs of body weight. Split total daily amount into two equal feedings, morning and evening. Gradually increase feeding rate (over a period of 3-4 weeks) to approximately 3 lbs per 100 lbs of body weight. Adjust final feeding rate according to desired rate of gain, market weight and degree of finish. Feed good quality grass-alfalfa or alfalfa hay to appetite and free choice salt and mineral. Assure a constant supply of fresh, clean water. Contact your local Westfeeds Dealer or Territory Manager for additional product information.

CAUTION: The safety of Lasalocid for use in unapproved species has not been established. Do not allow horses or other equines access to feeds containing Lasalocid as ingestion may be fatal. Mix thoroughly with grain and/or roughage prior to feeding. Feeding undiluted or mixing errors may result in an excess Lasalocid concentration that could be fatal to cattle and sheep.

Westfeeds Locations

Billings, MT
1-800-283-5505

Great Falls, MT
1-800-926-1074

Lewistown, MT
1-800-348-5451

Miles City, MT
1-800-339-3109



ShowPride Swine Grow-Finish AU-50



Product Description

A high quality complete ration that provides essential vitamins, minerals, protein and energy to market pigs being fitted for show

Features & Benefits

- Provides 18% protein, 5.0% fat and 1.2% Lysine
- High quality ingredients enhance feed intake and gains
- Unique fat source produces a hard, clean cover and finish
- High levels of amino acids promote lean muscle growth
- Complexed trace minerals increase nutrient absorption
- Manna oligosaccharides (MOS) and beta glucans improve animal health and performance
- Yeast cultures enhance feed palatability and digestion
- Aureomycin improves feed efficiency and gain
- Produced utilizing good manufacturing practices for superior quality
- Manufactured by a locally owned and operated company for products you can trust

Guaranteed Analysis*

Crude Protein, minimum.....	18.0 %
Lysine, minimum.....	1.2 %
Crude Fat, minimum.....	5.0 %
Crude Fiber, maximum.....	3.5 %
Calcium, minimum.....	0.7 %
Calcium, maximum.....	1.2 %
Phosphorous, minimum.....	0.6 %
Salt, minimum.....	0.5 %
Salt, maximum.....	1.0 %
Zinc, minimum.....	140 ppm
Selenium, minimum.....	0.3 ppm

Medicated

For increased rate of weight gain and improved feed efficiency.

Active Drug Ingredient

Chlortetracycline.....50 GMS/TON

Ingredients*

Ground Corn, Soybean Meal, Barley, Dried Whey, Dried Milk Protein, Animal Fat (Preserved with Ethoxyquin), Lecithin (a stabilizer), Sodium Triphosphate, Sodium Silico Aluminate, Molasses, Calcium Carbonate, Mono-calcium Dicalcium Phosphate, Salt, Dried Brewers Yeast (*Saccharomyces cerevisiae*), Dried Yeast Fermentation Solubles, L-Lysine HCl, Choline Chloride, dl Alpha Tocopherol Acetate (Vitamin E), Niacinamide, dl-Calcium Pantothenate, Vitamin B12, Biotin, Menadione Sodium Bisulfate Complex (Vitamin K), Vitamin A Acetate, Riboflavin, Cholecalciferol (Source of Vitamin D3), Pyridoxine HCl, Thiamine Mononitrate, Folic Acid, Ferrous Sulfate, Zinc Oxide, Manganous Oxide, Zinc Sulfate, Copper Sulfate, Manganese Sulfate, Soybean Oil, Sodium Selenite, Calcium Iodate, Zinc Amino Acid Complex, Manganese Amino Acid Complex, Copper Amino Acid Complex, Cobalt Glucoheptonate, Manna Oligosaccharide, dl-Methionine

* Guaranteed analysis and ingredients may vary slightly, depending on manufacturing location.

Mixing/Feeding Directions

Generally, this complete feed may be fed free choice as the sole ration for show pigs weighing from 75 lbs to market or show weight. Feed intake may be limited in order to meet goals of individual feeding programs. Always ensure a constant supply of fresh, clean water. Contact your local Westfeeds Dealer or Territory Manager for additional product information.

Westfeeds Locations

Billings, MT
1-800-283-5505

Great Falls, MT
1-800-926-1074

Lewistown, MT
1-800-348-5451

Miles City, MT
1-800-339-3109